



DENVER
COUNTERS



EURO FRAMELESS

Product Catalog 2024

www.denvercountersllc.com



FOLLOW US ON SOCIAL MEDIA



Mon-Fri: 8AM - 5PM
Saturday: 9AM - 1PM

1740 E 66th Ave,
Denver CO 80229

(720) 229-6305

ABOUT

DENVER COUNTERS

At Denver Counters LLC, our main goal is to streamline the process of acquiring the best cabinets, making it fast, convenient and affordable.

Distinguished by our commitment to excellence, Denver Counters LLC presents an innovative approach to cabinets. Our meticulously crafted products boast an unparalleled fusion of design, style, and effortless assembly, all offered at an exceptionally affordable rate. Backed by a decade of expertise, our teams excel in the realms of design, production, and seamless cabinet installation, showcasing our dedication to delivering superior quality.

What sets our cabinets apart? Engineered with a unique blend of opulent, stylish finishes and robust plywood support, our all-wood cabinets redefine the balance between sophistication and durability. This distinctive design not only keeps acquisition costs at a minimum but also ensures a resilient and enduring product. The versatility of our design enables easy packing and shipping to any destination, facilitating a seamless process for retailers and customers alike - simplifying purchase, loading, and delivery to their respective job sites.



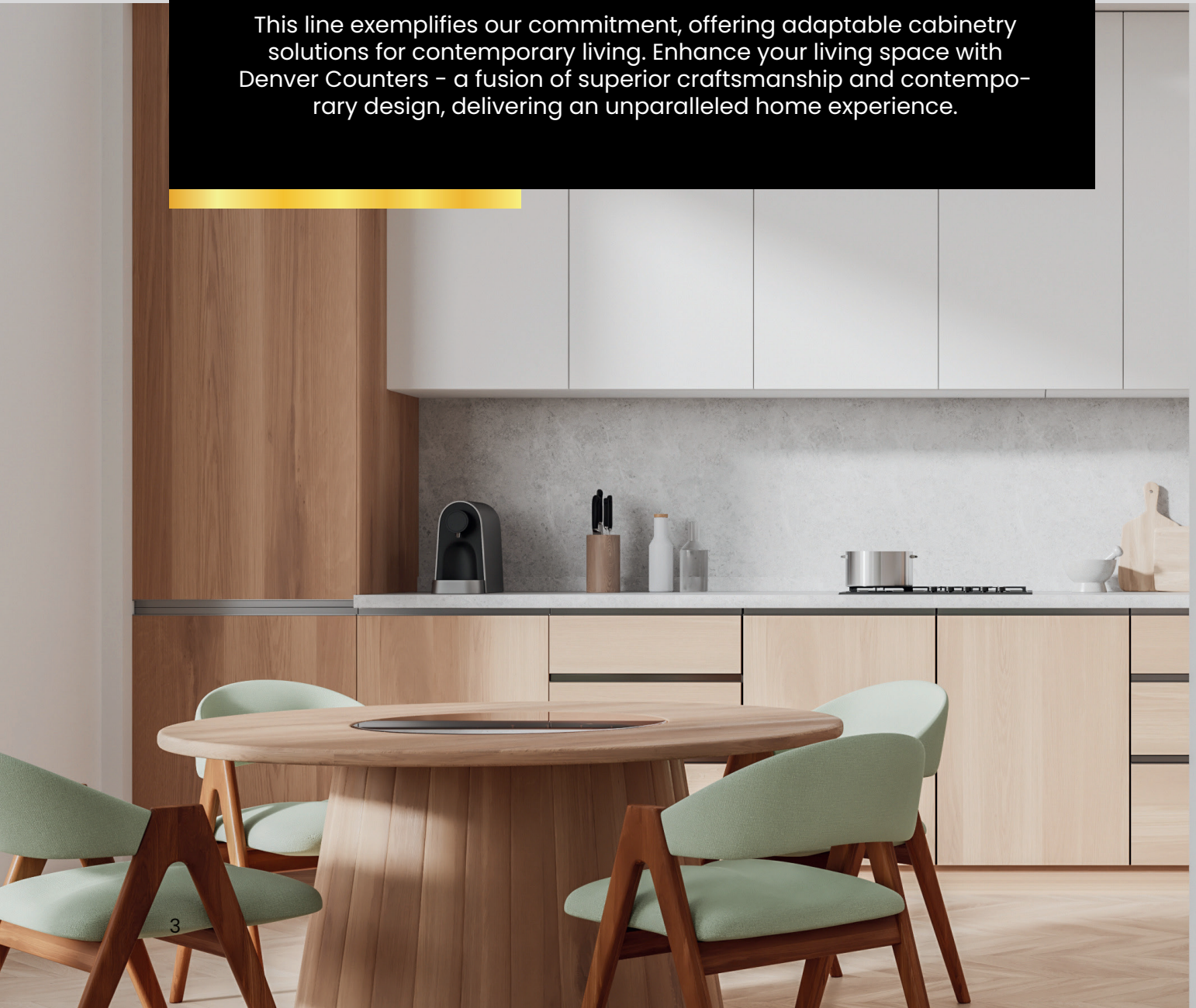
www.denvercountersllc.com

INTRODUCING OUR VERY OWN

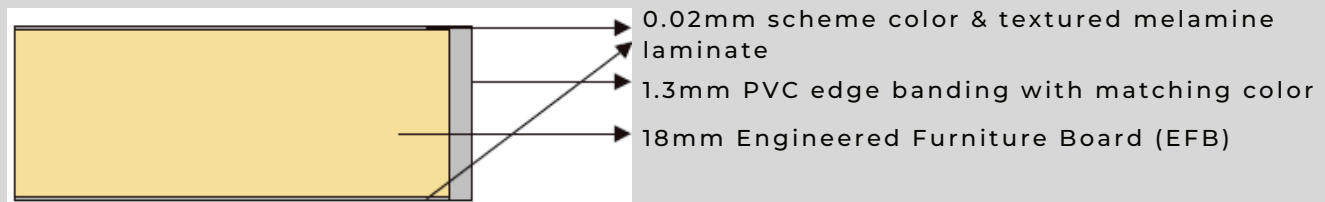
FRAMELESS COLLECTION

Presenting Denver Counters exclusive Frameless Collection - a novel range of European styled cabinets meticulously crafted to enhance your kitchen and bathroom areas. Constructed with enduring melamine in the Classic doors and utilizing engineered furniture board in the Deluxe doors, these cabinets showcase modern frameless design that maximizes space efficiency while ensuring robust and refined aesthetics. The discreet hinges and full-overlay doors contribute to the sleek lines and minimalist allure characteristic of European cabinetry, bringing both style and practicality to your everyday life. Our dedication lies in crafting living spaces that seamlessly merge sophistication and innovation.

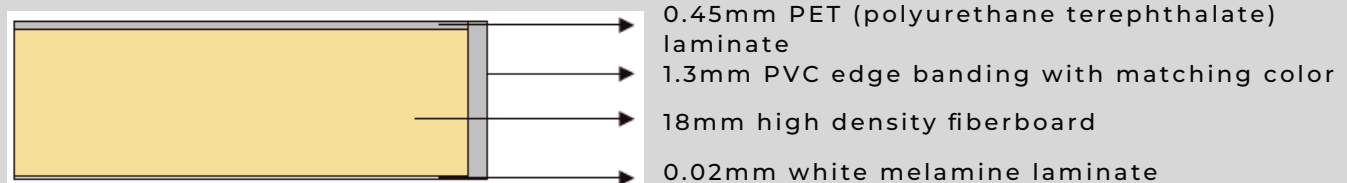
This line exemplifies our commitment, offering adaptable cabinetry solutions for contemporary living. Enhance your living space with Denver Counters - a fusion of superior craftsmanship and contemporary design, delivering an unparalleled home experience.



MATERIALS FACTS



Product Specifications - Classic Series Doors	
Core Material	EPA Title VI compliant partical board
Coating Finish	0.02mm melamine laminate
Back Finish	
Edge Banding	1.3mm PVC edge banding with matching color & texture
Features	Environemntally friendly material Significant cost advantage Vivid wood texture & color Never fading, no color difference between doors



Product Specifications - Deluxe Series PET Doors	
Core Material	EPA Title VI Compliant medium density fiberboard
Coating Finish	0.45mm PET (polyurethane terephthalate) laminate
Back Finish	0.02mm white melamine laminate
Edge Banding	1.3mm PVC laser edge banding with matching color.
Features	Moisture resistance, acid and alkali tolerant. High gloss & vivid color finishes. Easy to clean. Antibacterial, safe for direct food contact. Never fading, no color difference between doors.

COLLECTION STRUCTURE

Denver Counters LLC is designed for lasting use, crafted with care to meet precise standards using engineered furniture boards. Our European Frameless collection features fully adjustable hinges and drawer glides with soft-close technology for a touch of luxury. We keep it simple yet reliable, ensuring that this line brings a touch of enduring style and convenience to your spaces.



Cabinet Structure

1. Door Panel
2. 6-way adjustable soft-close hinge
3. 3/4"(18mm) melamine laminated shelf
4. 1/4" (6mm) back panel with top and bottom enforced rail
5. 3/4"(18mm) engineered furniture board side panels with toe kick
6. 5/8"(16mm) melamine laminated bottom & back panels of the drawer
7. Premium metal drawers with 90° sides
8. Conformat connecting system for easy and more durable assembly
9. Full access 6-way adjustable soft-close drawer system

LIMITED LIFETIME WARRANTY POLICY

THIS LIMITED WARRANTY IS SUBJECT TO ALL LIMITATIONS, EXCLUSIONS, DISCLAIMERS, APPROVAL, AND PROCEDURES.

As a direct manufacturer, Denver Counters LLC is confident in the cabinets we sell. We stand behind our products and offer a one-of-a-kind Limited Lifetime Warranty. FIRST year immediate claim processing. Two (2) years + will have a 6-12 week lead time for processing. Proof of Purchase AND a Warranty Claim Form must be presented to begin the warranty claim process. If you have a warranty claim, please contact Denver Counters LLC at **720 229 6305** and fill out the Warranty Claim Form with a detailed description and pictures of the defects or damage you are experiencing with our products. Email the form, pictures, and details to info@denvercountersllc.com and upon receiving your email, we will let you know of our decision to repair or replace the defective product. **DO NOT PROCEED TO THE NEXT STEP WITHOUT THE PRIOR WRITTEN CONSENT OF DENVER COUNTERS LLC** will be responsible for all shipping and handling fees if a valid claim is approved. Return of defective product, at the customer's expense, IS required for a replacement to be issued.

For a period of ONE YEAR from the original purchase date, Denver Counters LLC warrants to the original purchaser that cabinetry, door hinges, and drawer glides will be free from defects in material and workmanship under normal use and service. We will process these first-year claims as promptly as possible. This warranty is not transferable and only applicable to product used for single family owner occupied residential purposes. This warranty does not cover normal wear and tear, damage or defects caused by accidents, misused, or abused items, mishandled improperly installed items, improperly stored items, customized or modified items, or items that are subject to extreme temperature or moisture level.

Upon entering the SECOND year, this warranty is extended to a Lifetime Warranty and all warranty claims processes will remain in effect. Proof of Purchase required. Please allow a 6-12-week lead time for processing these claims. These processing times for Denver Counters LLC warrants to the original purchaser that cabinetry, door hinges, and drawer glides will be free from defects in material and workmanship under normal use and service. Covers all products that are still available in our inventory and/or not discontinued.

Natural woods may vary in color and grain pattern. Just as no two trees are alike, no two pieces of wood are alike. The variation in color and grain pattern in the wood adds to its natural beauty and is not considered an imperfection. Environmental factors, including but not limited to artificial / natural light, moisture, cleaners, smoke, etc. may cause the darkening or mellowing of the cabinet over time. This is a natural process and can be expected. This warranty does not cover the natural aging or darkening / mellowing of wood color, the inherent growth characteristics of, or variation in wood.

Wood is wood, expansion and contraction still happens year after year as it compensates and adjusts to ever changing atmospheric humidity and temperature conditions. Therefore, warping of less than 1/4" is not considered a defect. The purchaser agrees to let doors that are warped 1/4" or more to hang for two seasons before replacement is requested. Typically, a door will return to its normal flat position once it is acclimated to temperature, and humidity conditions. Prior to requesting a replacement for a warped door, please be sure the door has been installed properly and hinges are adjusted correctly.

LIMITED LIFETIME WARRANTY POLICY

Stain variations: since no two trees are the same, wood is a unique material with natural variations in grain, texture, and color. These variations may also cause considerable differences between old samples and new cabinets. Please Note: Newly produced cabinets will never be the same color as aged samples or cabinets. Color changes may occur in the finished wood products. As a result of exposure to light and other elements which are part of the aging process. These material variations and changes are not covered by this warranty.

Some of the cabinet lines feature a glazed finish which accentuates the door and drawer front profiles. This glaze is hand applied over a stain or paint and may, due to the nature of application, consist of random drips, runs, etc. As glazing is a hand applied process there will be variations in color and appearance from door to door and cabinet to cabinet. This is not considered a defect and is considered normal with hand applied finishes. Cabinet lines with painted surfaces may show fractures in the paint at the joints. This is normal and is not considered a defect.

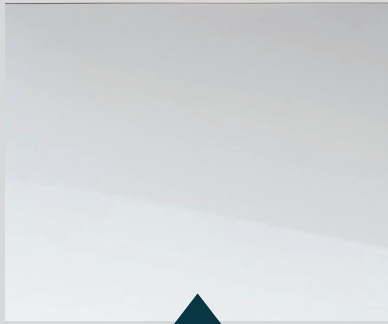
At our discretion, we may elect to repair or replace a cabinet with a functionally equivalent product covered by this warranty. Some replacement parts are subject to stock availability and may differ from original parts received. Return of defective product IS required for a replacement to be issued. Repair parts or replacement parts are at the expense of Denver Counters LLC. This warranty does not include or cover the cost of installation, adjustments, removal, subsequent damage, or transportation of the defective product. This is regardless of whether work was performed by a contractor, service company, or yourself. To obtain service under this warranty, please contact the business from whom you purchased this product. A copy of the original purchaser's dated receipt must be submitted with all claims to preserve rights under this warranty.

This warranty is non-transferable. Denver Counters LLC reserves the right to inspect the claimed defective cabinets. No returns, replacements or repairs may be made without prior written consent.

This warranty is the sole warranty of Denver Counters LLC. No dealer, distributor or agent possesses any authority whatsoever to modify or enlarge the above warranty in any way.



DELUXE COLORS



GLOSS WHITE

Gloss White redefines cabinet design with its modern, seamless profile. This option exudes timeless sophistication, perfect for elevating kitchens and bathrooms with durability and easy maintenance.



MATTE GREY

Matte Grey brings modern elegance to your kitchen or bathroom with its muted matte grey finish. Perfect for contemporary designs, it adds sophistication and a calming ambiance to your space.



MATTE WHITE

Matte White cabinets feature modern sophistication in matte white. Ideal for kitchen or bathroom remodels, adding a timeless and fresh touch to contemporary designs

CLASSIC FINISHES

NATURAL OAK

Elevate your remodel with Natural Oak – a seamless, timeless cabinet design in light natural wood finish for sophistication, durability, and easy maintenance in kitchens and bathrooms.



WALNUT

Perfect for kitchens and bathrooms, they exude enduring charm while keeping maintenance hassle-free. Let your space reflect your unique style with a touch of Walnut sophistication.



Deluxe (engineered furniture board) - Classic (melamine)

CUSTOM FINISHES & COLORS



EGGER H1176



EGGER H1180



EGGER H1181



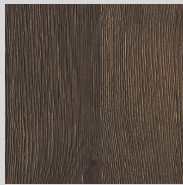
EGGER H1212



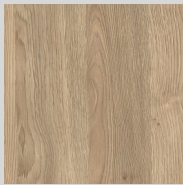
EGGER H3182



EGGER H3309



EGGER H3325



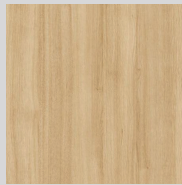
EGGER H3326



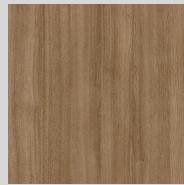
EGGER H3157



TAFISA L538



TAFISA L581(K)



TAFISA L582(K)



TAFISA L584(K)



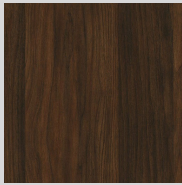
TAFISA M20003(Y)



TAFISA M2004(Y)



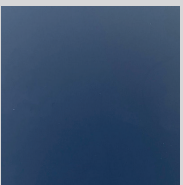
TAFISA M2007(Y)



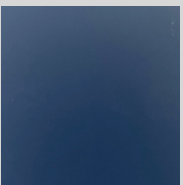
TAFISA M2014(Y)



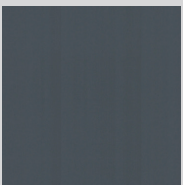
TAFISA L474



PET ROYAL BLUE
1S HG



PET ROYAL BLUE
1S SM



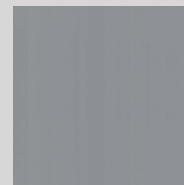
PET STONE GREY
1S HG



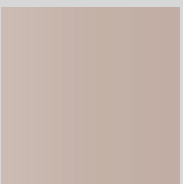
PET STONE GREY
1S SM



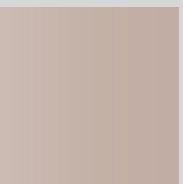
PET SUN GREY
1S HG



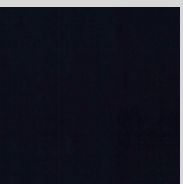
PET SUN GREY
1S SM



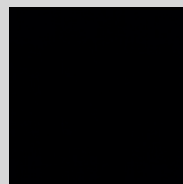
PET CREAM
TOFFEE HG



PET CREAM
TOFFEE SM



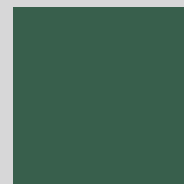
PET ECLIPSE 1S HG



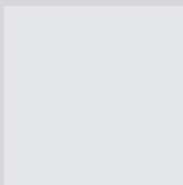
PET ECLIPSE 1S SM



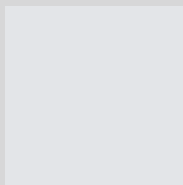
PET MAJESTIC
1S HG



PET MAJESTIC
1S HG



PET PASTEL HG



PET PASTEL SM



ALVIC FACTORY
01 1S



ALVIC FACTORY
02 1S

HG = HIGH GLOSS SM = SUPER MATTE Please contact us for details.



**Gloss
White**



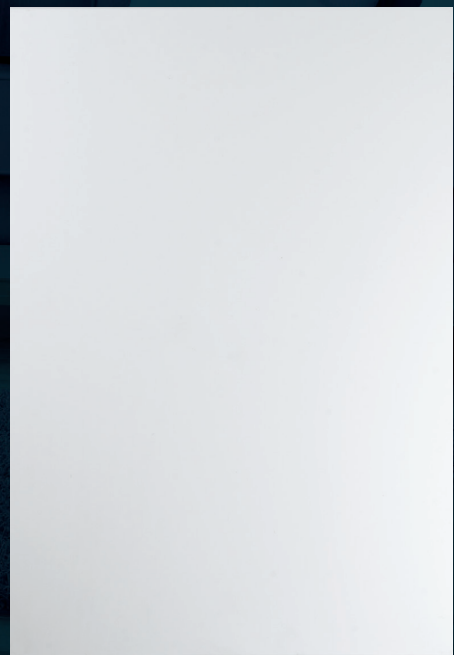


**Matte
Grey**





**Matte
White**





**Natural
Oak**

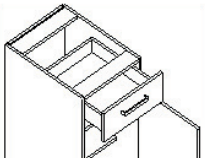




Walnut



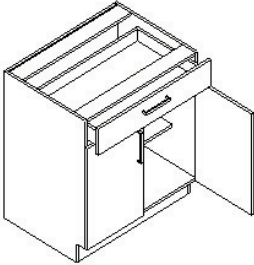
Cabinet MSRP List

Base Cabinet	Item	Box	Classic	Deluxe	Custom Classic	Custom Deluxe
	B12	401	40	81	97	147
	B15	425	49	99	119	180
	B18	448	57	115	138	209
	B21	473	66	132	158	240
	B24	517	77	155	186	282

*One drawer one door style

*6" height drawer and 24" height door

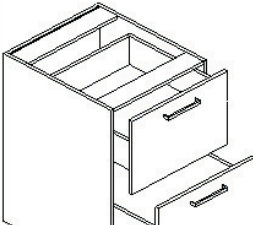
*Drawer hardware price is included in BOX price

Base Cabinet	Item	Box	Classic	Deluxe	Custom Classic	Custom Deluxe
	B24DD	517	77	155	186	282
	B27	540	86	173	207	315
	B30	563	95	189	227	344
	B33	585	103	206	247	375
	B36	610	112	223	268	406

*One drawer double doors style

*6" height drawer and 24" height doors

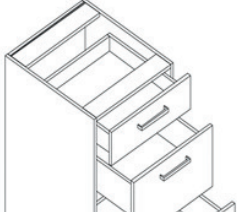
*Drawer hardware price is included in BOX price

2-Drawers Base Cabinet	Item	Box	Classic	Deluxe	Custom Classic	Custom Deluxe
	2DB12	523	40	81	97	147
	2DB15	547	49	99	119	180
	2DB18	573	57	115	138	209
	2DB21	597	66	132	158	240
	2DB24	619	74	148	178	270
	2DB27	645	83	166	200	303
	2DB30	669	91	182	219	332
	2DB33	694	100	200	239	363
	2DB36	718	108	217	260	394

*Two equal height drawers style (15")

*Drawer hardware price is included in BOX price

*Drawer hardware is separately packed

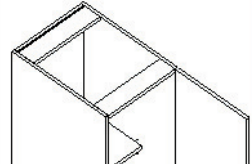
3-Drawers Base Cabinet	Item	Box	Classic	Deluxe	Custom Classic	Custom Deluxe
	3DB12	658	44	87	105	159
	3DB15	691	52	105	125	190
	3DB18	722	61	122	146	221
	3DB21	751	69	139	166	252
	3DB24	784	77	155	186	282
	3DB30	845	95	189	227	344
	3DB36	907	112	223	268	406

*6", 12" & 12" height drawers segmented from top

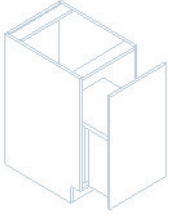
*Drawer hardware price is included in BOX price

*Drawer hardware is separately packed

Cabinet MSRP List

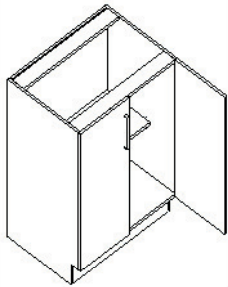
Base Full Door Cabinet	Item	Box	Classic	Deluxe	Custom Classic	Custom Deluxe
	B09FHD	246	29	57	68	104
	B12FHD	261	37	74	89	135
	B15FHD	278	45	90	108	164
	B18FHD	295	54	108	130	197
	B21FHD	312	62	124	149	226
	B24FHD	349	74	148	178	270

*Full height one door style

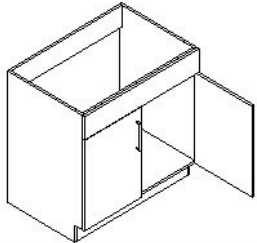
Base Cabinet - Pull Out Trash Can	Item	Box	Classic	Deluxe	Custom Classic	Custom Deluxe
	BWBK	295	54	108	130	197

Trash Kit	512
-----------	-----

*Only available in 18 inch

Base Full Door Cabinet	Item	Box	Classic	Deluxe	Custom Classic	Custom Deluxe
	B24FHDD	349	74	148	178	270
	B27FHD	365	83	166	200	303
	B30FHD	383	91	182	219	332
	B33FHD	399	100	200	239	363
	B36FHD	415	108	217	260	394

*Full height double doors style

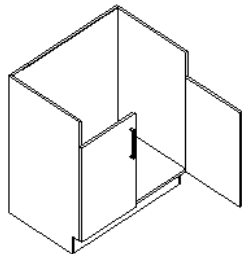
Sink Base Cabinet	Item	Box	Classic	Deluxe	Custom Classic	Custom Deluxe
	SB30	314	95	189	227	344
	SB33	323	103	206	247	375
	SB36	333	112	223	268	406
	SB39	366	121	242	291	441

*6" height false drawer panel on top

*Double doors style

Cabinet MSRP List

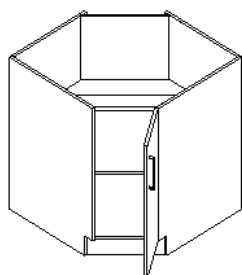
Special Sink Base Cabinet



Item	Box	Classic	Deluxe	Custom Classic	Custom Deluxe
FSM36	422	83	166	200	303

* FSM is for Farm/Apron Sink,
* Door Height: 18"

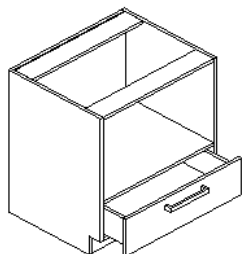
Comer Sink Base Cabinet



Item	Box	Classic	Deluxe	Custom Classic	Custom Deluxe
CSB36	694	54	108	130	197

*Corner sink base: 36" on both sides from the wall

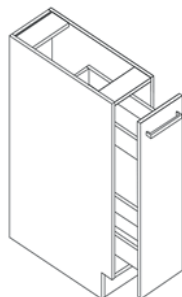
Base Microwave Cabinet



Item	Box	Classic	Deluxe	Custom Classic	Custom Deluxe
BMC27	518	35	70	84	128
BMC30	543	49	99	119	180

*Open space height=18"
*12" height drawer on the bottom

Base Spice Rack Cabinet

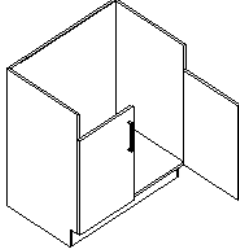


Item	Box	Classic	Deluxe	Custom Classic	Custom Deluxe
SP09L	523	29	57	68	104
SP09R	523	29	57	68	104
SP12L	569	37	74	89	135
SP12R	569	37	74	89	135

*Door and Hardware is preassembled with box
*Price of hardware is included

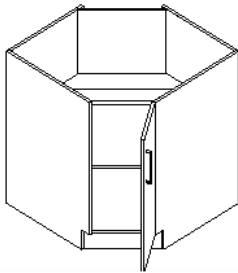
Cabinet MSRP List

Special Sink Base Cabinet	Item	Box	Classic	Deluxe	Custom Classic	Custom Deluxe
	FSM36	422	83	166	200	303



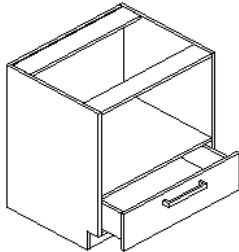
* FSM is for Farm/Apron Sink,
* Door Height: 18"

Corner Sink Base Cabinet	Item	Box	Classic	Deluxe	Custom Classic	Custom Deluxe
	CSB36	694	54	108	130	197



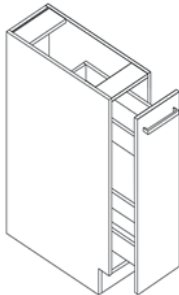
*Corner sink base: 36" on both sides from the wall

Base Microwave Cabinet	Item	Box	Classic	Deluxe	Custom Classic	Custom Deluxe
	BMC27	518	35	70	84	128
	BMC30	543	49	99	119	180



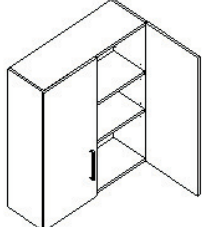
*Open space height=18"
*12" height drawer on the bottom

Base Spice Rack Cabinet	Item	Box	Classic	Deluxe	Custom Classic	Custom Deluxe
	SP09L	523	29	57	68	104
	SP09R	523	29	57	68	104
	SP12L	569	37	74	89	135
	SP12R	569	37	74	89	135




*Door and Hardware is preassembled with box
*Price of hardware is included

Cabinet MSRP List

Wall Cabinet 30"H & 36"H	Item	Box	Classic	Deluxe	Custom Classic	Custom Deluxe
	W2430DD	292	74	148	178	270
	W2730	308	83	166	200	303
	W3030	326	91	182	219	332
	W3330	341	100	200	239	363
	W3630	358	108	217	260	394
	W2436DD	313	88	176	211	320
	W2736	330	98	197	236	358
	W3036	347	108	217	260	394
	W3336	364	119	238	285	432
	W3636	380	129	257	309	469

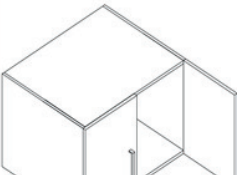
*Double doors style

*30" and 36" height cabinets have 2 adjustable shelves

Wall Cabinet 42"H	Item	Box	Classic	Deluxe	Custom Classic	Custom Deluxe
	W2442DD	379	102	203	244	370
	W2742	399	113	226	271	412
	W3042	418	125	250	300	455
	W3342	440	137	275	329	500
	W3642	460	149	298	358	543

*Double door style

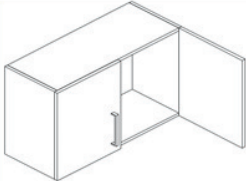
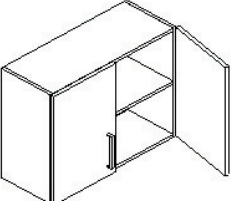
*42" height cabinets have 3 adjustable shelves

Wall Cabinet 24" Depth	Item	Box	Classic	Deluxe	Custom Classic	Custom Deluxe
	W361224	318	48	95	114	173
	W361524	334	57	115	138	209
	W361824	352	68	136	163	247
	W362124	371	77	155	186	282
	W302424	415	74	148	178	270
	W362424	459	88	176	211	320

*No shelf

*Double door style

*24" height cabinets have one shelf

Wall Bridge Cabinet	Item	Box	Classic	Deluxe	Custom Classic	Custom Deluxe
 	W3012	201	40	81	97	147
	W3015	212	49	99	119	180
	W3018	221	57	115	138	209
	W3021	233	66	132	158	240
	W3612	219	48	95	114	173
	W3615	231	57	115	138	209
	W3618	240	68	136	163	247
	W3621	254	77	155	186	282
	W3024	274	74	148	178	270
	W3624	298	88	176	211	320

*No shelf


*No shelf

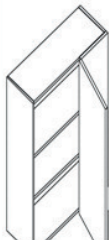
*Double door style

*24" height cabinets have one shelf

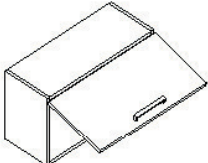
*All other height cabinets have no shelf

Cabinet MSRP List

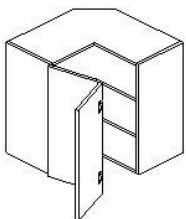
Aluminum Frame Glass Door	Item	Box	Classic	Deluxe	Custom Classic	Custom Deluxe
	W1530GD	221	78	156	187	284
	W1536GD	239	89	178	213	323
	W1542GD	284	101	201	242	367
	W1830GD	238	87	174	209	316
	W1836GD	257	99	199	238	361
	W1842GD	305	112	223	268	406
	W3030GD	326	156	312	374	567
	W3036GD	347	178	355	426	647
	W3042GD	418	201	403	483	733
	W3630GD	358	174	348	417	633
	W3636GD	380	199	397	477	723
	W3642GD	460	223	447	536	813

Wall Blind Corner Cabinet	Item	Box	Classic	Deluxe	Custom Classic	Custom Deluxe
	WBC3030	340	57	115	138	209
	WBC3036	371	68	136	163	247
	WBC3042	413	77	155	186	282
	WBC3030 Filler		28	56	67	102
	WBC3036 Filler		34	68	82	124
	WBC3042 Filler		39	79	95	144

*15" width doors and 6" width filler
 *Cabinet box is L/R reversible
 *30" & 36" height cabinets have 2 shelves
 *42" height cabinets have 3 shelves

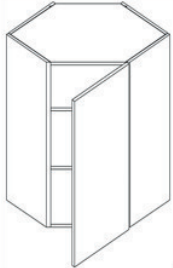
Wall Single Lift Cabinet	Item	Box	Classic	Deluxe	Custom Classic	Custom Deluxe
	WL3012	159	37	74	89	135
	WL3612	176	44	88	106	161
	WL3015	169	45	90	108	164
	WL3615	188	54	108	130	197
	WL3018	181	54	108	130	197
	WL3618	199	65	130	156	237

*One door, lift up style

Wall Lazy Susan Cabinet	Item	Box	Classic	Deluxe	Custom Classic	Custom Deluxe
	WLS2430	534	74	148	178	270
	WLS2436	567	88	176	211	320
	WLS2442	654	102	203	244	370

*Two attached doors
 *30" & 36" height cabinets have 2 shelves
 *42" height cabinets have 3 shelves

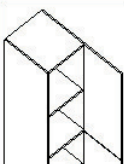
Cabinet MSRP List

Wall Diagonal Cabinet	Item	Box	Classic	Deluxe	Custom Classic	Custom Deluxe
	WDC2430	442	54	108	130	197
	WDC2436	475	65	130	156	237
	WDC2442	568	74	148	178	270

*30" & 36" height cabinets have 2 shelves

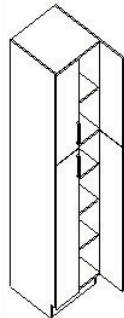
*42" height cabinets have 3 shelves

*Hinge open angle=45°

Pantry Cabinet	Item	Box	Classic	Deluxe	Custom Classic	Custom Deluxe
	PC1884	766	156	312	374	567
	PC1890	794	165	331	397	602
	PC1896	823	175	351	421	638
	PC2484	909	216	431	518	785
	PC2490	940	229	459	551	835
	PC2496	968	243	485	583	884


*Height of pantry include feet's height

*Double doors style, lower doors are 49 1/2" height

Pantry Cabinet	Item	Box	Classic	Deluxe	Custom Classic	Custom Deluxe
	PC2484DD	909	216	431	518	785
	PC2490DD	940	229	459	551	835
	PC2496DD	968	243	485	583	884
	PC3084	999	263	526	632	958
	PC3090	1029	280	561	673	1020
	PC3096	1060	297	595	714	1082

*Height of pantry include feet's height

*Quadruple doors style, lower doors are 49 1/2" height

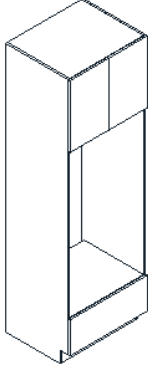
Micro-Oven Tall Cabinet	Item	Box	Classic	Deluxe	Custom Classic	Custom Deluxe
	MOC3084	1272	141	281	337	512
	MOC3090	1302	157	314	377	572
	MOC3096	1332	174	349	418	635

*Height of pantry include feet's height

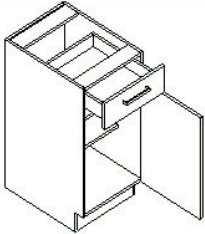
*Two equal drawers: 11 7/8" height

*Appliance cut-out height is 43" 1/4 - 46" 1/4


Cabinet MSRP List

Oven Tall Cabinet	Item	Box	Classic	Deluxe	Custom Classic	Custom Deluxe
	DOC3084	1052	103	206	247	375
	DOC3090	1057	120	240	288	437
	DOC3096	1102	137	275	329	500

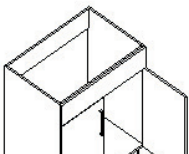
*Height of pantry include feet's height
 *Single drawer: 12" height
 *Appliance cut-out height is 52 1/4"

Vanity Base Cabinet	Item	Box	Classic	Deluxe	Custom Classic	Custom Deluxe
	VB12	398	40	81	97	147
	VB15	402	49	99	119	180
	VB18	425	57	115	138	209
	VB21	447	66	132	158	240

*One drawer one door style
 *6" height drawer and 24" height door
 *Drawer hardware price is included in BOX price

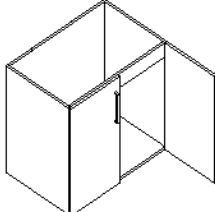
Vanity 3-Drawers Base Cabinet	Item	Box	Classic	Deluxe	Custom Classic	Custom Deluxe
	VDB12	642	44	87	105	159
	VDB15	672	52	105	125	190
	VDB18	701	61	122	146	221
	VDB21	732	69	139	166	252
	VDB24	762	77	155	186	282

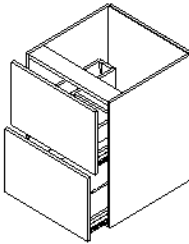
*6", 12" & 12" height drawers segmented from top
 *Drawer hardware price is included in BOX price
 *Drawer hardware is separately packed

Vanity Sink Base Cabinet	Item	Box	Classic	Deluxe	Custom Classic	Custom Deluxe
	VSB24	275	77	155	186	282
	VSB24DD	275	77	155	186	282
	VSB27	282	86	173	207	315
	VSB30	292	95	189	227	344
	VSB33	303	105	209	251	380
	VSB36	309	112	223	268	406

*6" height dummy drawer panel on top
 *Double doors style (except VSB24 single door)

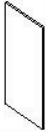
Cabinet MSRP List

Floating Vanity Base Cabinet	Item	Box	Classic	Deluxe	Custom Classic	Custom Deluxe
	FVB24	326	61	122	146	221
*One full height door						
	FVB24DD	326	61	122	146	221
	FVB30	347	67	135	162	246
	FVB36	357	74	148	178	270
*Two full height doors						


Floating Vanity Drawer Cabinet	Item	Box	Classic	Deluxe	Custom Classic	Custom Deluxe
	FVD12	507	34	68	82	124
	FVD15	536	40	81	97	147
	FVD18	565	48	95	114	173
	FVD21	593	54	108	130	197
	FVD24	615	61	122	146	221
	FVD27	641	68	136	163	247
	FVD30	668	74	148	178	270
	FVD33	694	81	162	195	296
	FVD36	720	88	176	211	320
*Two equal height (12") drawer fronts						
*Upper drawers apply normal height drawer hardware						
*Drawer hardware price is included in BOX price						
*Drawer hardware is separately packed						




Accessory MSRP List

Island Base Panel	Item	Classic	Deluxe	Custom Classic	Custom Deluxe	Size
	IBEP24	88	176	211	320	25 5/8" x 34 1/2"
	IBEP36	126	253	303	460	37 5/8" x 34 1/2"
	IBEP48	166	333	399	605	49 1/2" x 34 1/2"


* Same material as door panel, 3/4" thickness

Match End Panel	Item	Classic	Deluxe	Custom Classic	Custom Deluxe	Size
	BFD22	76	151	181	275	21 3/4" x 34 1/2"
	BFD25	88	176	211	320	25 5/8" x 34 1/2"
	FD1330	39	78	93	142	12 3/4" x 30"
	FD1336	45	90	108	164	12 3/4" x 36"
	FD1342	53	106	128	194	12 3/4" x 42"
	REP8425	199	398	478	724	25" x 84 x 3/4"
	REP9025	212	425	510	773	25" x 90 x 3/4"
	REP9625	227	454	545	826	25" x 96 x 3/4"
	PNL34.5x96x3/4	317	634	760	1153	

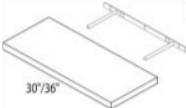
* Same material as door panel, 3/4" thickness


Filler	Item	Classic	Deluxe	Custom Classic	Custom Deluxe
	WF330	14	29	34	52
	WF336	18	35	42	64
	WF342	19	39	47	71
	WF630	28	56	67	102
	WF636	34	68	82	124
	WF642	39	79	95	144
	WF396	45	89	107	163
	WF696	90	181	217	329

*One extra panel is provided per filler
*Same material as door panel

Roll Out Tray	Item	MSRP
	ROT15	191
	ROT18	205
	ROT21	220
	ROT24	234
	ROT27	248
	ROT30	263
	ROT33	278
	ROT36	293

*Item number indicates applicable cabinet width

Floating Shelf	Item	Classic	Deluxe	Custom Classic	Custom Deluxe
	FS30	169	247	406	450
	FS36	206	319	495	581

Toe Kick	Item	Classic	Deluxe	Custom Classic	Custom Deluxe
	TK8	50	101	121	183





Get in touch with us!



(720) 229-6305



info@denvercountersllc.com



www.denvercountersllc.com

1740 E 66th Ave, Denver CO 80229



DENVER COUNTERS

www.denvercountersllc.com